



Products & Services Overview

March 2024

Mercer Mass Timber (MMT) is a wholly-owned subsidiary of Mercer International, a global provider of renewable materials and energy.

clt@mercerint.com
mercermasstimber.com





Mercer Mass Timber

Advancing wood innovation for a better tomorrow

Mercer Mass Timber is an integrated mass timber technical partner, providing best-in-class design and engineering, manufacturing, and building expertise. With three factories across North America, MMT maintains the highest capacity and top-quality production capabilities in the region. MMT has optimized its fabrication technologies and expanded its product catalog to supply for a wide range of design expressions and building types.

Unparalleled Capacity, Superior Quality

The highest quality cross-laminated timber (CLT) and glue-laminated timber (GLT), and largest production capacity across three factories in North America.

Flexible, Integrated Mass Timber Technical Expertise

Material sourcing, design, assembly, and installation, tailored for every project to meet client needs.

Mass Timber Innovation

Creative product, design, testing, and sustainability approaches to solve the most complex project challenges.

MMT Project Services

We approach each project with flexibility. From supply-only to mass timber super-subcontracting and design assistance, MMT will provide services that fit the need.

Mercer Mass Timber Subcontracting

Project Assist

- + Technical Design-Assist
- + Estimating/Preconstruction

Mass Timber Material Fabrication

- + Shop Drawings
- + CNC Machining
- + CLT Panel Prefab
- + Off-site Weather Protection
- + Off-site Hardware Installation

Project Delivery

- + 4D BIM: Scheduling
- + 5D BIM: Predictive Cost Modeling
- + Logistics
- + Procurement

Installation

- + Full Erection
- + Logistics Planning & Sequencing
- + Lift/Bracing Engineering
- + Site Supervision/Consultation
- + 4D Construction Scheduling



80M
Washington, DC

MMT Product Catalog

Product Offerings



Cross-laminated Timber



Glue-laminated Timber



Finger-jointed Lumber

CLT Grades

1.4V 875 = V2, 1.4V 750 ≥ V3, 1.8M ≥ E1

Sizing

up to 12' x 60'

Layup Options

3-, 5-, 7-, and 9-ply

GLT Grades: Framing and Industrial

Manufactured: 24F-V8, 20F-V7, 16F-V6

Fabricated: 24F, 20F, 16F (DF-L, SPF, SYP)

Species

Spruce-Pine-Fir (SPF), Douglas Fir-Larch (DF-L), Southern Yellow Pine (SYP)

Visual Grade

Architectural Appearance (AA) and Industrial Appearance (IA)

Build Systems



Heavy Timber Post and Beam

Heavy timber frame with primary glulam girders, secondary glulam purlins, and CLT one-way floor panels (Type III-A, V-A, or IV-HT).

Beam and Panel

Heavy timber frame with flat glulam beams supported by massive 2-hr or 3-hr FRR columns with thick CLT one-way floor panels (Type IV-A/B/C).

Mass Timber Bearing Wall

CLT bearing walls with CLT one-way floor panels.

Heavy Timber Frame with Infill

Heavy timber frame with glulam beams and columns and CLT one-way floor panels. Framed infill walls in LWF (light framed wood) (Types V, III) or CFS (cold-formed steel) (Type IV).

Steel Frame with Infill

Steel frame with primary steel beams and columns and CLT one-way floor panels. Framed infill walls in LWF or CFS (Types V-B, III-B).

CFS or LFW Bearing Wall

CFS and LFW bearing and shear walls with CLT one-way floor panels.

Post and Panel

Heavy timber columns with CLT two-way floor panels. Framed infill walls in LWF or CFS (Types V-B, III-B type).

Chain of Custody

Our factories have earned chain of custody certification from three major certification programs:



Programme for the Endorsement of Forest Certification



Sustainable Forestry Initiative®



Forest Stewardship Council®



BC Passive House
Mount Currie, BC

MMT Manufacturing

Our manufacturing facilities in Washington state, Arkansas, and British Columbia feature the largest CLT presses currently in operation worldwide. This gives us the ability to dramatically scale the production of mass timber in North America and drive industry-wide growth. At full operation, our factories are the largest producers of mass timber by volume in the region.

By the Numbers

255,000 m³

Total annual production capacity across our factories

210,000 m³

Total annual production capacity of CLT

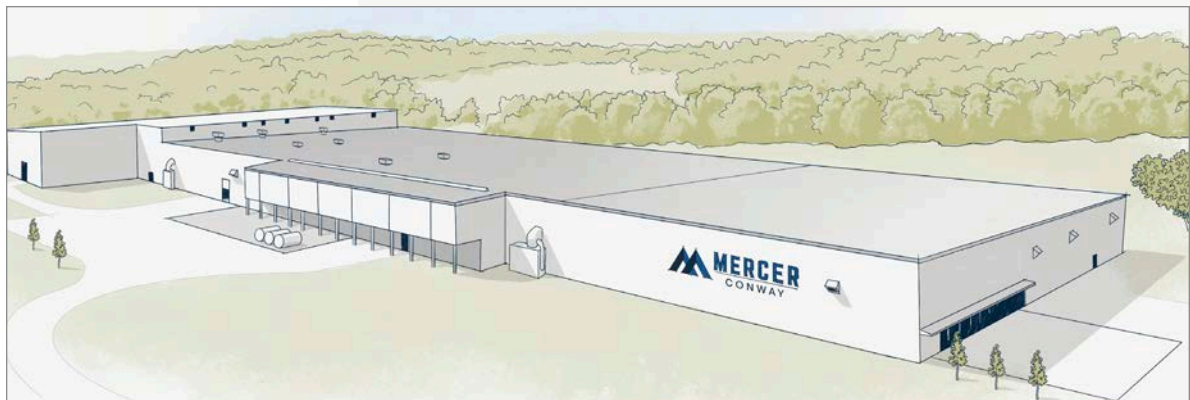
45,000 m³

Total annual production capacity of GLT



Mercer Conway

Our Conway facility is set to meet the demand for mass timber building products in the southern, central, and eastern United States, serving as a complement to our operations in the Pacific Northwest.



74,000 m³

Annual CLT and GLT production capacity

124 acres

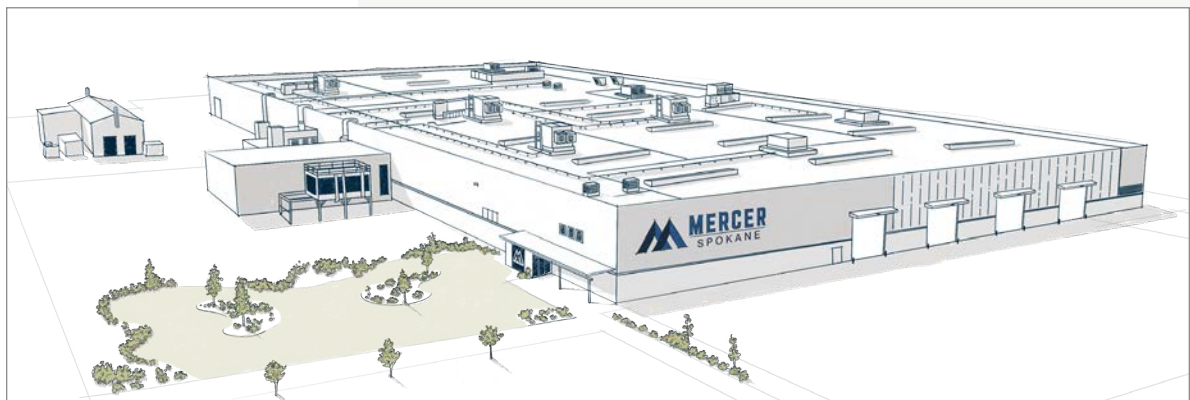
Situated close to transportation corridors

19 million

Acres of sustainable forestland in close proximity

Mercer Spokane

Our Spokane Valley facility occupies 37 acres and offers easy access to rail lines and interstate highways. At full operation, Mercer Spokane is one of the most sophisticated and largest-producing CLT plants by volume in North America.



140,000 m³

Annual CLT and GLT production capacity

13,000,000 ft²

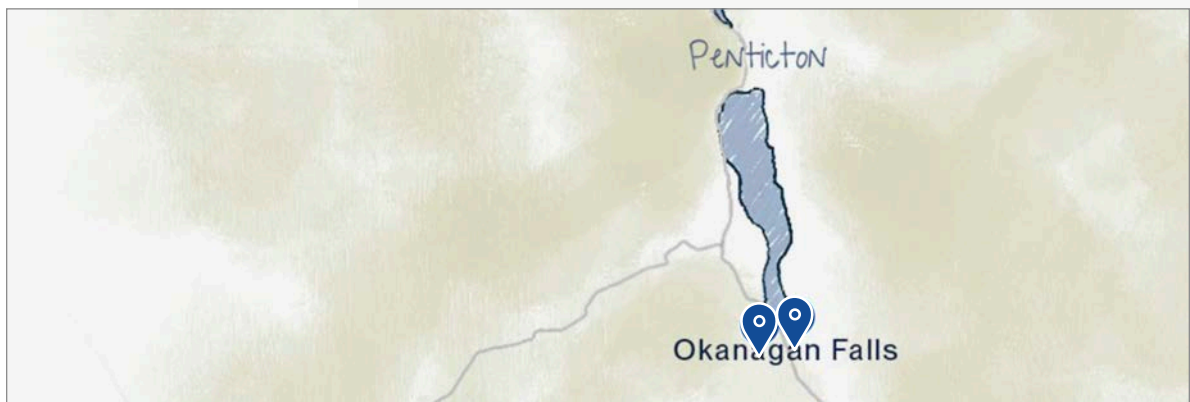
Annual 5-ply CLT production capacity

1,400

Number of 12 ft x 60 ft billets produced each month

Mercer Okanagan

With two facilities strategically located across the Okanagan Valley, Mercer Okanagan is uniquely positioned to provide mass timber solutions for construction and industrial markets in both Canada and the United States.



41,000 m³

Annual CLT and GLT production capacity

155,000 ft²

Total square footage of our three manufacturing plants



High Line Timber Bridge
New York, NY

MMT Technical Team

Mercer Mass Timber combines technical and operational expertise with experts in the mass timber building community. The result is an organization with an unparalleled track record across mass timber R&D, product integrity testing, design, manufacturing, and construction – a combination that makes us uniquely suited to deliver high-quality mass timber products at mass scale.

Product Development



Todd Beyreuther, PE
Director, Product
Development



Brent Olson, PhD
Technical Director,
Materials



Michael Wright, PE, SE
Product Engineer,
Structural Systems

Project Engineering & VDC



Ricardo Brites, PhD, Eng°
Director of Project Engineering
& VDC



Johan Reissmuller, MEng
Senior Mass Timber
Engineer



**Katherine Setterlund,
PEng, MEng**
Senior Mass Timber
Engineer



Ryan Cable
BIM Lead



Kurt Youell
Fabrication Design Lead

Project Execution



Jason Trenn
Director, Project
Management



Houston Hunter
Senior Project Manager



Andre Norrie
Project Manager



Judah Bucher
Project Manager

Construction Services



Jason Church
Construction Manager



Nate Foster
Sr. Project Manager



Andrew Shelton
Sr. Superintendent

Let's Work Together

Designed to reduce carbon emissions while offering unparalleled strength and versatility, our products stand at the intersection of innovation and sustainability.

Discover how your projects can benefit from our cutting-edge technology and quality mass timber products. Reach out to our sales team and start building a greener tomorrow.

MMT Sales and Business Development

With our extensive coverage across North America, our sales team is ready to support you in creating sustainable and innovative structures with our mass timber solutions.



John Kostaras
Director of Sales & Regional Manager,
Southwest
e: john.kostaras@mercerint.com



Stephanie Kullman
Regional Manager, Western Canada
e: stephanie.kullman@mercerint.com



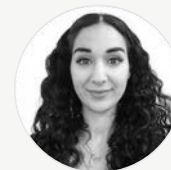
Ryan Edwards
Regional Manager, Pacific Northwest
e: ryan.edwards@mercerint.com



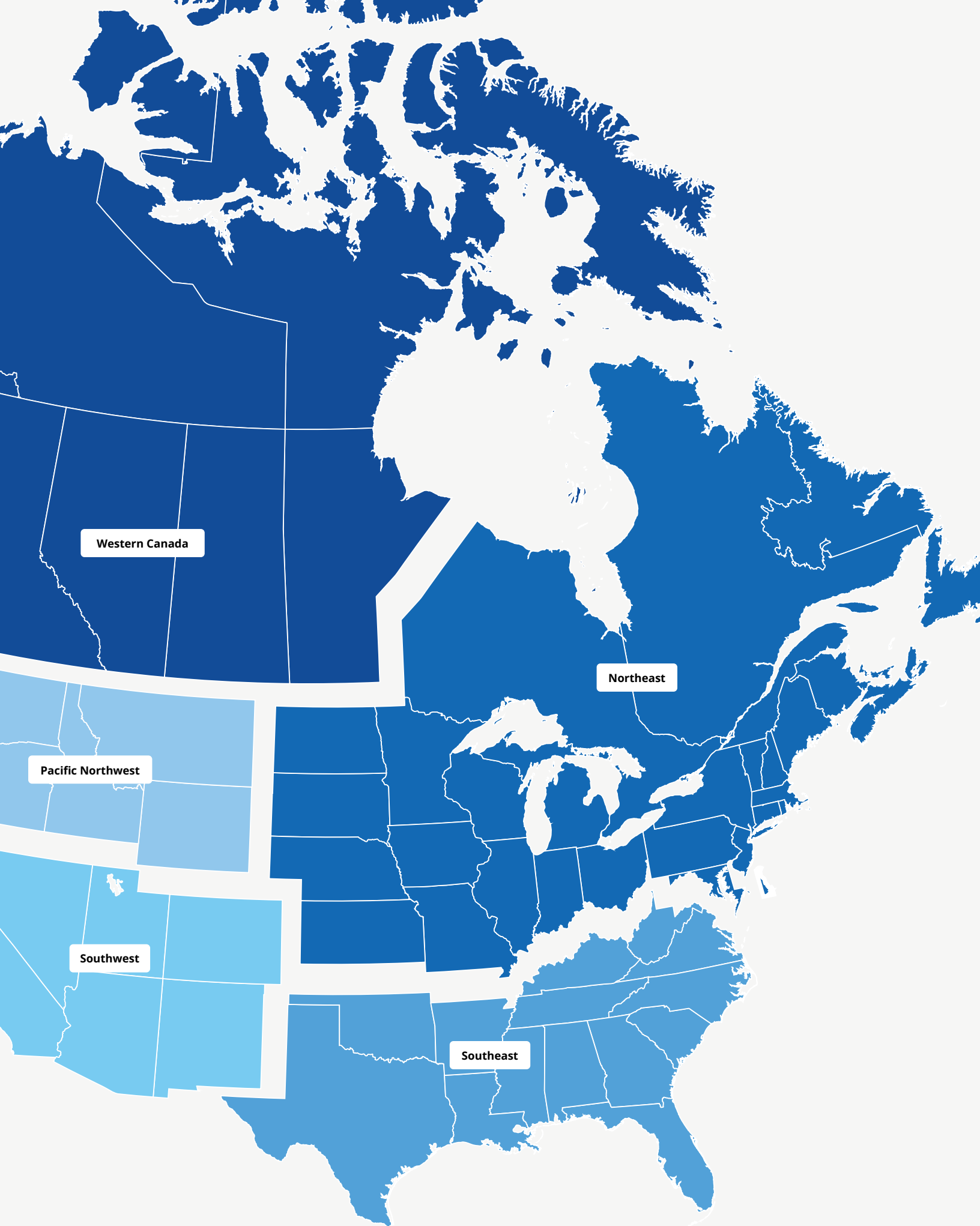
Sung Cho
Regional Manager, Southeast
e: sung.cho@mercerint.com



Calum Dodson
Regional Manager, Northeast
e: calum.dodson@mercerint.com



Kalliopi Florides, CEng, MEng
Sr. Manager of Strategic Accounts
and Preconstruction
e: kalliopi.florides@mercerint.com



Western Canada

Northeast

Pacific Northwest

Southwest

Southeast







Mercer Mass Timber

MMT Project Services

700 West Pender Street, Suite 1120
Vancouver, BC, V6C 1G8
Canada

MMT Construction Services

19202 Garland Avenue
Spokane Valley, WA 99027
United States

MMT Manufacturing

Mercer Conway

1800 Sturgis Road
Conway, AR 72034
United States

Mercer Spokane

19202 Garland Avenue
Spokane Valley, WA 99027
United States

Mercer Okanagan

1716 Wallis Road
Okanagan Falls, BC V0H 1R2
Canada

clt@mercrint.com
mercermasstimber.com